

MainsFit (UL Type-B) T5

9T5HE/COR/22-5CCT/MF12/G 25/1

The MainsFit (UL Type-B) lamps are designed to be the perfect retrofit solution to move from traditional fluorescent lamps to energy saving LEDs. This ballast bypass lamp has everything needed built into the lamp with proven energy savings, long life, surge suppression and industry leading safety features. All lamps in the MainsFit family are double-ended to help simplify the installation. In addition, all lamps meet the Philips standards for light quality so that end users will be in a comfortable environment regardless of the MainsFit lamp type.

Product data

| General Information | |
|--|-------------------------------|
| Cap-Base | G5 |
| Nominal lifetime | 50,000 hour(s) |
| Switching Cycle | 200,000 |
| Lighting Technology | LED |
| Light Technical | |
| Color Code | 3000K/3500K/4000K/5000K/6500K |
| Beam Angle (Nom) | 160 degree(s) |
| Luminous Flux | 1,200 lm |
| Color Designation | 3000K/3500K/4000K/5000K/6500K |
| Correlated Color Temperature (Nom) | 3000 3500 4000 5000 6500 K |
| Luminous Efficacy (rated) (Nom) | 133 lm/W |
| Color Consistency | <6 |
| Color rendering index (CRI) | 80 |
| LLMF At End Of Nominal Lifetime (Nom) | 70 % |
| Photobiological safety according to EN 62471 | RG0 |

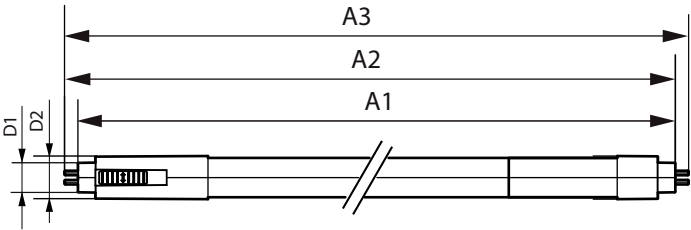
| Operating and Electrical | |
|---------------------------|-------------|
| Input Frequency | 50 to 60 Hz |
| Power Consumption | 9 W |
| Lamp Current (Nom) | 80 mA |
| Wattage Equivalent | 14 W |
| Starting Time (Nom) | 0.5 s |
| Warm-up time to 60% light | 0.5 s |
| Power Factor (Fraction) | 0.9 |
| Voltage (Nom) | 120-277 V |
| UL Type | UL Type B |
| Temperature | |
| T-Case Maximum (Nom) | 70 °C |
| Controls and Dimming | |
| Dimmable | No |

MainsFit (UL Type-B) T5

| Mechanical and Housing | |
|---------------------------|---|
| Bulb Finish | Frosted |
| Bulb Material | Glass |
| Product Length | 600 mm |
| Bulb Shape | T5 |
| Net Weight (Piece) | 0.090 kg |
| Approval and Application | |
| Energy Saving Product | Yes |
| Approval Marks | RoHS compliance UL certificate KEMA Keur certificate |
| EU RoHS compliant | Yes |
| Ambient temperature range | -20 to +45 °C |

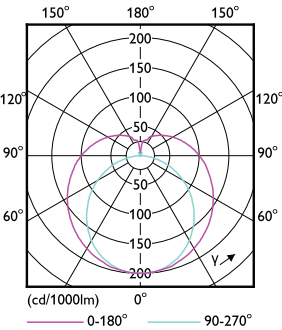
| Application Conditions | |
|-------------------------------------|-------------------------------|
| can it be used in closed luminaires | Yes |
| Product Data | |
| Order product name | 9T5HE/COR/22-5CCT/MF12/G 25/1 |
| Full product name | 9T5HE/COR/22-5CCT/MF12/G 25/1 |
| Order code | 929004235104 |
| Material Nr. (12NC) | 929004235104 |
| Numerator - Quantity Per Pack | 1 |
| EAN/UPC - Product/Case | 046677592776 |
| Numerator - Packs per outer box | 25 |
| EAN/UPC - Case | 50046677592771 |

Dimensional drawing

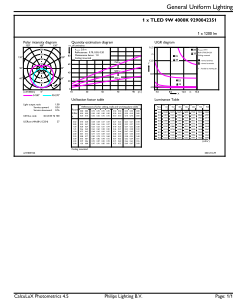


| Product | D1 | D2 | A1 | A2 | A3 |
|-------------------------------|---------|-------|----------|----------|----------|
| 9T5HE/COR/22-5CCT/MF12/G 25/1 | 15.7 mm | 23 mm | 547.8 mm | 554.9 mm | 563.2 mm |

Photometric data



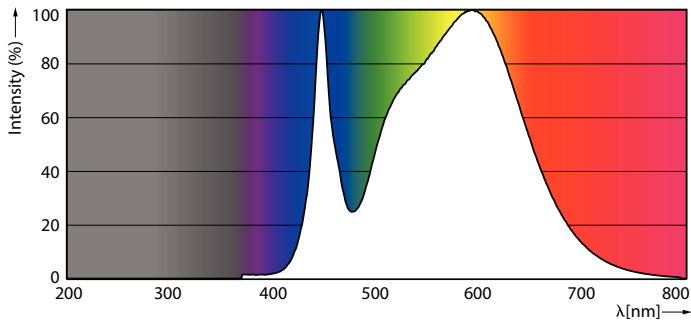
Light Distribution Diagram - 9T5HE/COR/22-5CCT/MF12/G 25/1



General uniform lighting - 9T5HE/COR/22-5CCT/MF12/G 25/1

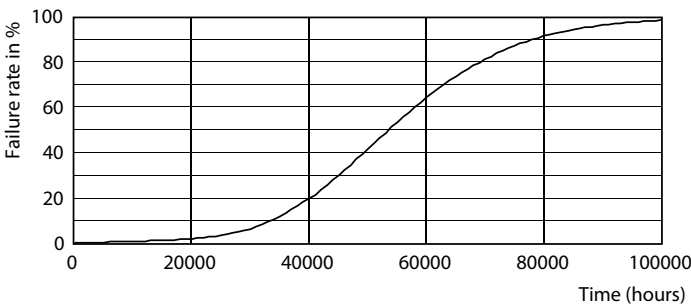
MainsFit (UL Type-B) T5

Photometric data

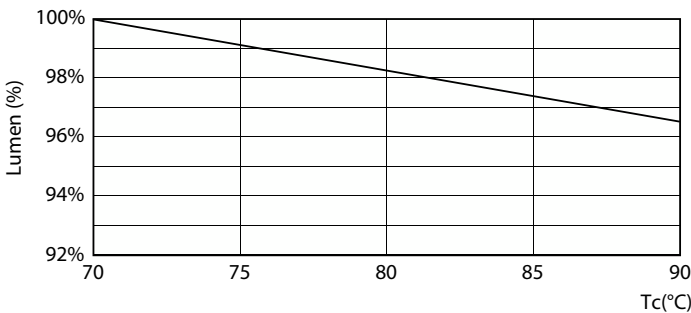


Spectral Power Distribution Colour - 9T5HE/COR/22-5CCT/MF12/G 25/1

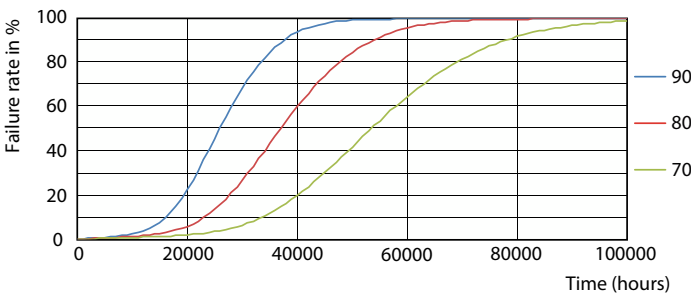
Lifetime



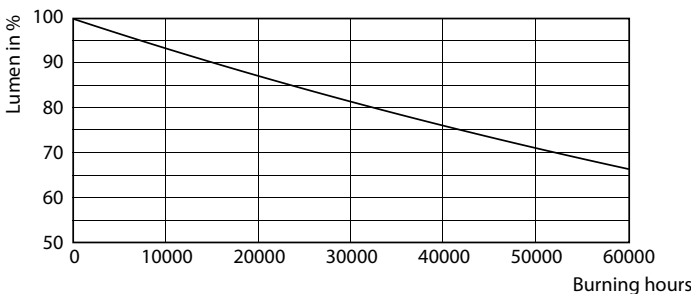
Life Expectancy Diagram



Lumen Maintenance Diagram - 9T5HE/COR/22-5CCT/MF12/G 25/1



LEDtube 50K 7090 FailureRate-LED



Lumen Maintenance Diagram - 9T5HE/COR/22-5CCT/MF12/G 25/1

MainsFit (UL Type-B) T5

Lifetime



LifetimeVsTc

