



FlexFit (Hybrid UL Type A + B) T8

7.5T8/COR/24-5CCT/FF11/G/DIM 25/1

Philips FlexFit (Hybrid UL Type A + B) lamps are designed with the customer in mind for installation flexibility. The FlexFit lamp can operate as both a plug and play (UL Type-A) and double-ended direct wire (UL Type-B). As with all Philips products, the FlexFit family of lamps are compatible with more ballasts than any manufacturer giving the customer peace of mind during installation. Additionally, the long life (50K hours) delivers reduced maintenance and replacement costs. If the ballast should fail, simply cut the ballast from the system and wire the tube directly to line voltage (120-277V)!

Product data

General Information	
Cap-Base	G13
Nominal lifetime	50,000 hour(s)
Switching Cycle	50,000
Lighting Technology	LED
Light Technical	
Color Code	3000K/3500K/4000K/5000K/6500K
Beam Angle (Nom)	220 degree(s)
Luminous Flux	1,050 1,050 1,100 1,100 1,100 lm
Color Designation	3000K/3500K/4000K/5000K/6500K
Correlated Color Temperature (Nom)	3000 3500 4000 5000 6500 K
Luminous Efficacy (rated) (Nom)	141 lm/W
Color Consistency	<6
Color rendering index (CRI)	80
LLMF At End Of Nominal Lifetime (Nom)	70 %

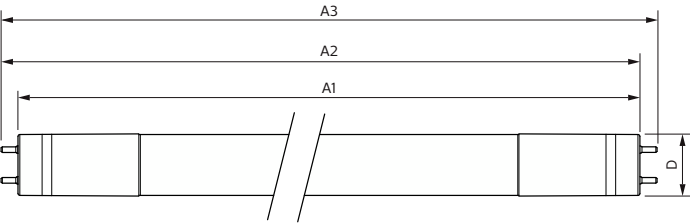
Operating and Electrical	
Input Frequency	50 to 60 Hz
Power Consumption	7.5
Lamp Current (Max)	78 mA
Lamp Current (Min)	35 mA
Wattage Equivalent	17 W
Starting Time (Nom)	0.5 s
Warm-up time to 60% light	0.5 s
Power Factor (Fraction)	0.9
Voltage (Nom)	120-277 V
UL Type	UL Type A+B
Temperature	
T-Case Maximum (Nom)	55 °C

FlexFit (Hybrid UL Type A + B) T8

Controls and Dimming	
Dimmable	Only with specific dimmers
Mechanical and Housing	
Bulb Finish	Frosted
Bulb Material	Plastic
Product Length	600 mm
Bulb Shape	T8
Net Weight (Piece)	0.126 kg
Approval and Application	
Energy Saving Product	Yes
Approval Marks	RoHS compliance UL certificate DLC compliance
EU RoHS compliant	Yes
Ambient temperature range	-20 to +45 °C

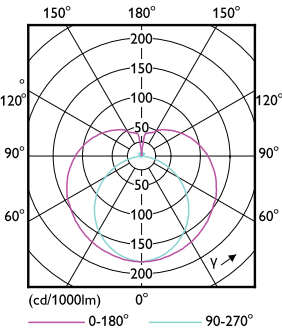
Application Conditions	
can it be used in closed luminaires	Yes
Product Data	
Order product name	7.5T8/COR/24-5CCT/FF11/G/DIM 25/1
Full product name	7.5T8/COR/24-5CCT/FF11/G/DIM 25/1
Order code	929003794504
Material Nr. (12NC)	929003794504
Numerator - Quantity Per Pack	1
EAN/UPC - Product/Case	046677588625
Numerator - Packs per outer box	25
EAN/UPC - Case	50046677588620

Dimensional drawing

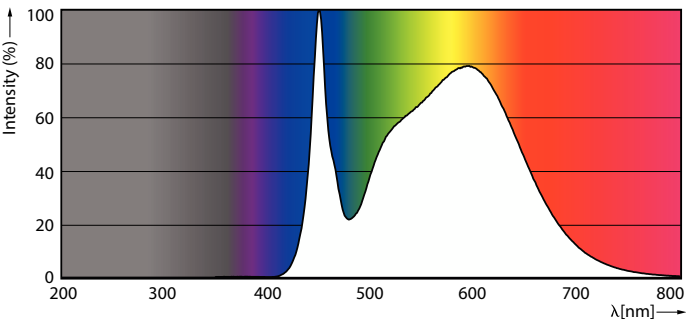


Product	D1	D2	A1	A2	A3
7.5T8/COR/24-5CCT/FF11/G/DIM 25/1	25.7 mm	28 mm	588.6 mm	595.7 mm	602.8 mm

Photometric data



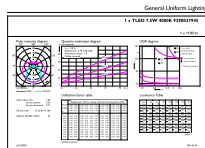
Light Distribution Diagram - 7.5T8/COR/24-5CCT/FF11/G/DIM 25/1



Spectral Power Distribution Colour - 7.5T8/COR/24-5CCT/FF11/G/DIM 25/1

FlexFit (Hybrid UL Type A + B) T8

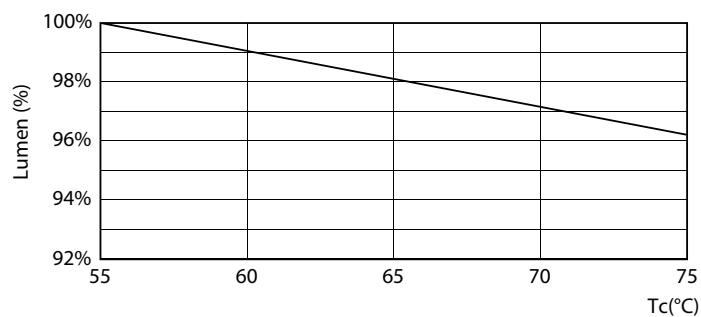
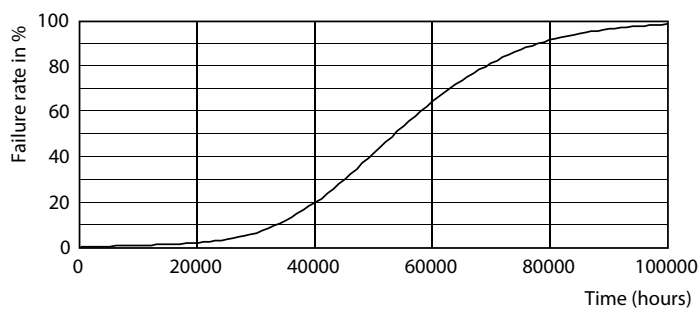
Photometric data



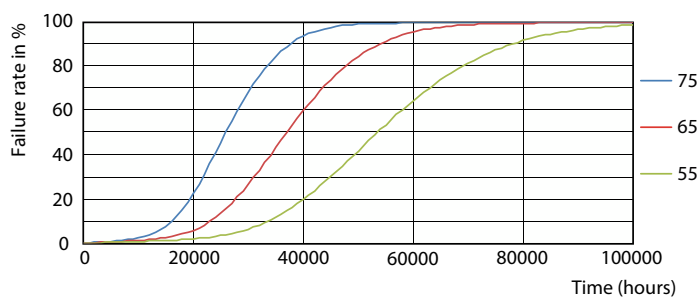
Colloidal Phosphorus 4.5	Phage Lighting 8.7	Page 5
--------------------------	--------------------	--------

General uniform lighting - 7.5T8/COR/24-5CCT/FF11/G/DIM 25/1

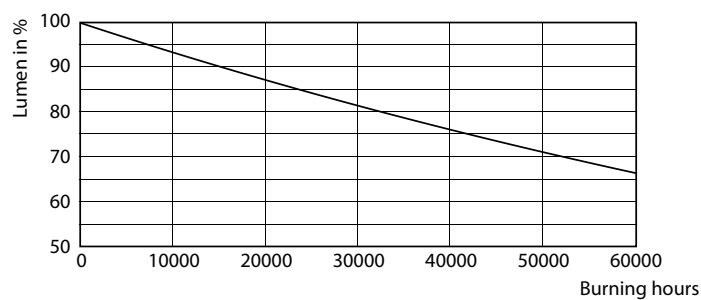
Lifetime



Life Expectancy Diagram



Lumen Maintenance Diagram - 7.5T8/COR/24-5CCT/FF11/G/DIM 25/1

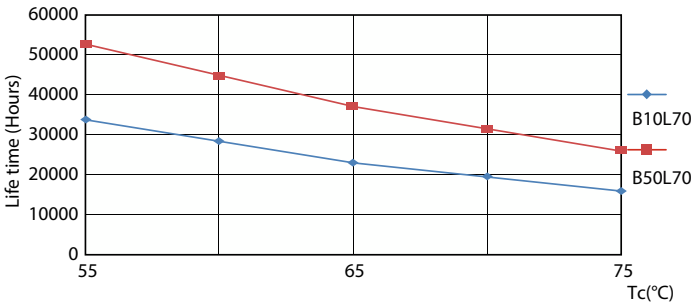


FailureRate

Lumen Maintenance Diagram - 7.5T8/COR/24-5CCT/FF11/G/DIM 25/1

FlexFit (Hybrid UL Type A + B) T8

Lifetime



LifetimeVsTc

