

CorePro MainsFit (UL Type-B) T8

9.9T8/COR/48-840/MF16/G/DIM 25/1

The CorePro MainsFit (UL Type B) lamps are designed to be the perfect retrofit solution to move from traditional fluorescent lamps to energy saving LEDs. This ballast bypass lamp has everything needed built into the lamp with proven energy savings, long life (up to 50k hours), surge suppression and industry leading safety features. All lamps in the CorePro MainsFit family are double-ended to help simplify the installation. In addition, all lamps meet the Philips standards for light quality so that end users will be in a comfortable environment regardless of the CorePro MainsFit lamp type.

Product data

General Information		LLMF At End Of Nominal Lifetime (Nom) 70 %	
Cap-Base	G13 [Medium Bi-Pin Fluorescent]		
Nominal lifetime	50,000 hour(s)		
Switching Cycle	50,000		
Lighting Technology	LED		
EU RoHS compliant	Yes		
Light Technical		Operating and Electrical	
Color Code	840 [CCT of 4000K]	Line Frequency	50 to 60 Hz
Beam Angle (Nom)	240 degree(s)	Input Frequency	50 to 60 Hz
Luminous Flux	1,600 lm	Power Consumption	9.9 W
Color Designation	Cool White (CW)	Lamp Current (Max)	85 mA
Correlated Color Temperature (Nom)	4000 K	Lamp Current (Min)	40 mA
Luminous Efficacy (rated) (Nom)	161.00 lm/W	Wattage Equivalent	32 W
Color Consistency	6SCDM	Starting Time (Nom)	0.5 s
Color rendering index (CRI)	80	Warm-up time to 60% light	0.5 s
		Power Factor (Fraction)	0.9
		Voltage (Nom)	120-277 V
		UL Type	UL Type B
		Temperature	
		Ambient temperature range	-20 °C to 45 °C

CorePro MainsFit (UL Type-B) T8

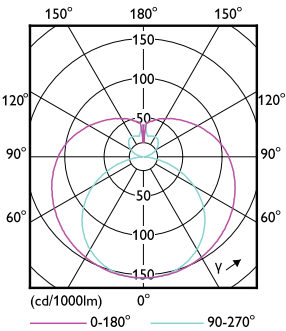
T-Case Maximum (Nom)	70 °C
Controls and Dimming	
Dimmable	Only with specific dimmers
Mechanical and Housing	
Bulb Finish	Frosted
Bulb Material	Glass
Product Length	1,200 mm
Bulb Shape	T8
Approval and Application	
Energy Saving Product	Yes
Approval Marks	RoHS compliance UL certificate DLC compliance

Application Conditions	
can it be used in closed luminaires	Yes
Product Data	
Order product name	9.9T8/COR/48-840/MF16/G/DIM 25/1
Full product name	9.9T8/COR/48-840/MF16/G/DIM 25/1
Order code	929003523804
Material Nr. (12NC)	929003523804
Numerator - Quantity Per Pack	1
EAN/UPC - Product/Case	046677579326
Numerator - Packs per outer box	25
EAN/UPC - Case	50046677579321

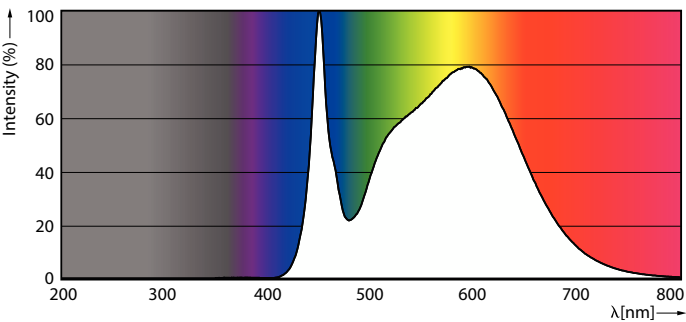
Dimensional drawing

Product	D1	D2	A1	A2	A3
9.9T8/COR/48-840/ MF16/G/DIM 25/1	25.7 mm	28 mm	1,198.2 mm	1,205.3 mm	1,212.4 mm

Photometric data



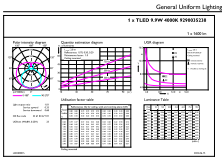
Light Distribution Diagram - 9.9T8/COR/48-840/MF16/G/DIM 25/1



Spectral Power Distribution Colour - 9.9T8/COR/48-840/MF16/G/DIM 25/1

CorePro MainsFit (UL Type-B) T8

Photometric data

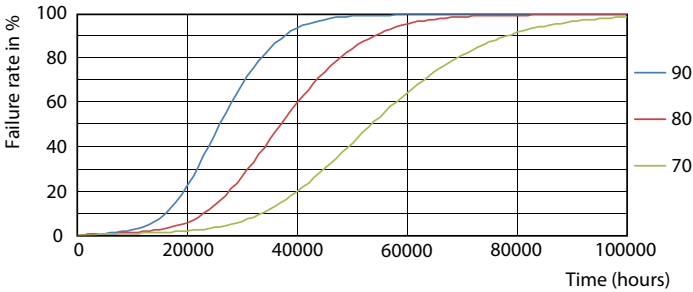


General Uniform Lighting - 9.9T8/COR/48-840/MF16/G/DIM 25/1

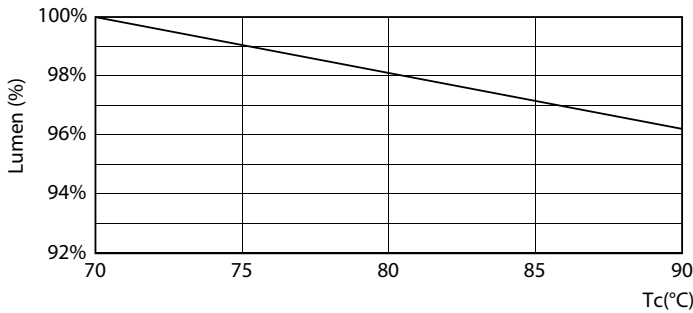
Lifetime



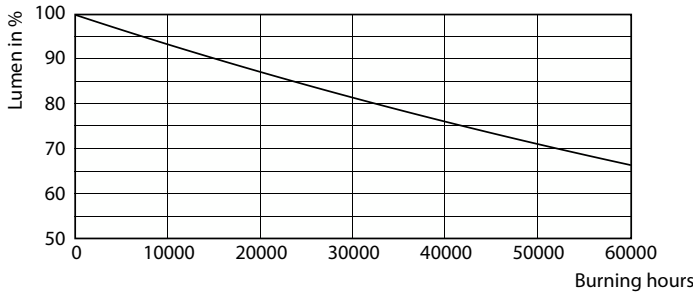
Life Expectancy Diagram - 9.9T8/COR/48-840/MF16/G/DIM 25/1



Life Expectancy Diagram - 9.9T8/COR/48-840/MF16/G/DIM 25/1



Lumen Maintenance Diagram - 9.9T8/COR/48-840/MF16/G/DIM 25/1



Lumen Maintenance Diagram - 9.9T8/COR/48-840/MF16/G/DIM 25/1

CorePro MainsFit (UL Type-B) T8

Lifetime



Life Expectancy Diagram - 9.9T8/COR/48-840/MF16/G/DIM 25/1

