



PL-C/T

11PL-C/T/COR/32V-3CCT/MF15/P/20/1

Philips PLED 4-pin & 2-pin lamps are an affordable LED solution to replace compact fluorescent lamps. The product provides a natural lighting effect for use in many lighting applications, and provides instant energy savings, making them an environmentally-friendly solution. Available as replacements for 13W, 26W and 32W compact fluorescent lamps.

Product data

General Information	
Cap-Base	G24q
Nominal lifetime	30,000 hour(s)
Switching Cycle	50,000
Lighting Technology	LED
Light Technical	
Color Code	3000/3500/4000
Beam Angle (Nom)	120 degree(s)
Luminous Flux	1,425 1,450 1,500 lm
Luminous Efficacy (rated) (Nom)	136.00 lm/W
Color Designation	3000/3500/4000
Correlated Color Temperature (Nom)	Selectable 3000 3500 4000 K
Color Consistency	<6
Color rendering index (CRI)	83
LLMF At End Of Nominal Lifetime (Nom)	70 %
Operating and Electrical	
Line Frequency	50 to 60 Hz
Input Frequency	50 to 60 Hz
Power Consumption	11 W
Lamp Current (Max)	98 mA

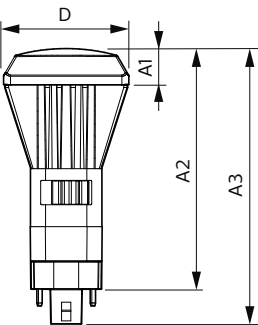
Lamp Current (Min)	39 mA
Wattage Equivalent	32 W
Starting Time (Nom)	0.5 s
Warm-up time to 60% light	0.5 s
Power Factor (Fraction)	0.9
Voltage (Nom)	120-277 V
UL Type	UL Type B
Temperature	
Ambient temperature range	-20 to +45 °C
T-Case Maximum (Nom)	75 °C
Controls and Dimming	
Dimmable	No
Mechanical and Housing	
Bulb Finish	Frosted
Bulb Material	Plastic
Product Length	100 mm
Bulb Shape	PL-C;PL-T

PL-C/T

Approval and Application	
Energy Saving Product	Yes
Approval Marks	RoHS compliance UL certificate
EU RoHS compliant	Yes
Application Conditions	
can it be used in closed luminaires	Yes
Product Data	
Order product name	11PL-C/T/COR/32V-3CCT/MF15/P/20/1

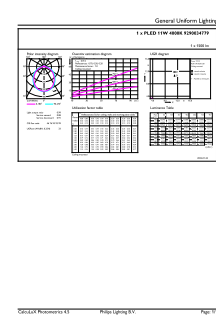
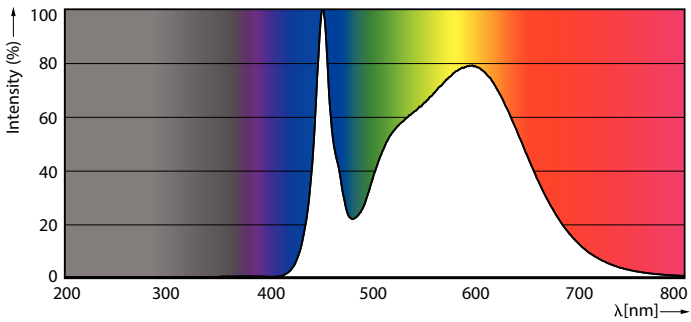
Full product name	11PL-C/T/COR/32V-3CCT/MF15/P/20/1
Order code	929003477904
Material Nr. (12NC)	929003477904
Numerator - Quantity Per Pack	1
Net Weight (Piece)	0.105 kg
EAN/UPC - Product/Case	046677577926
Numerator - Packs per outer box	20
EAN/UPC - Case	50046677577921

Dimensional drawing



Product	D	D2	A1	A2	A3
11PL-C/T/COR/32V-3CCT/MF15/P/20/1	54 mm		16 mm	104 mm	119 mm

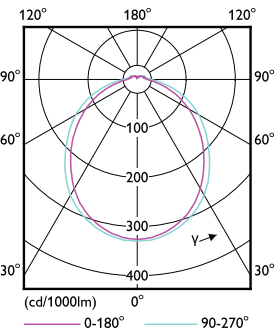
Photometric data



Spectral Power Distribution Colour - 11PL-C/T/COR/32V-3CCT/MF15/P/20/1

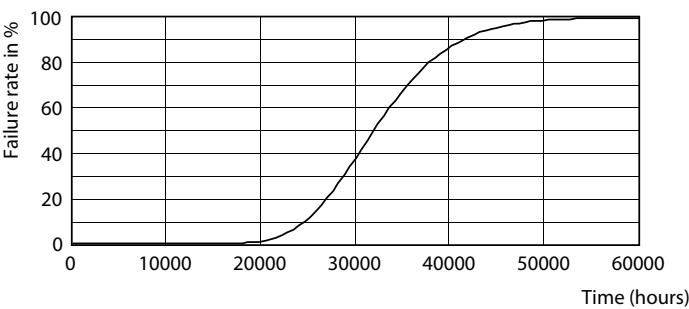
General uniform lighting - 11PL-C/T/COR/32V-3CCT/MF15/P/20/1

Photometric data

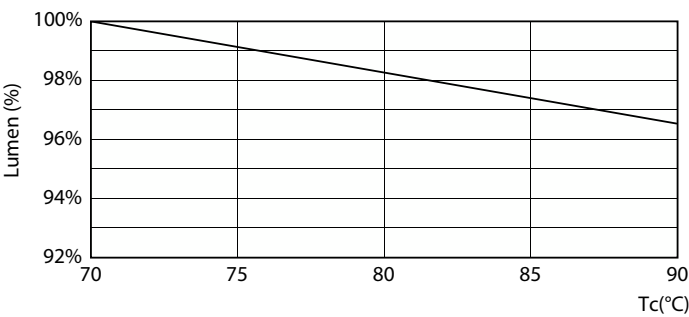


Light Distribution Diagram - 11PL-C/T/COR/32V-3CCT/MF15/P/20/1

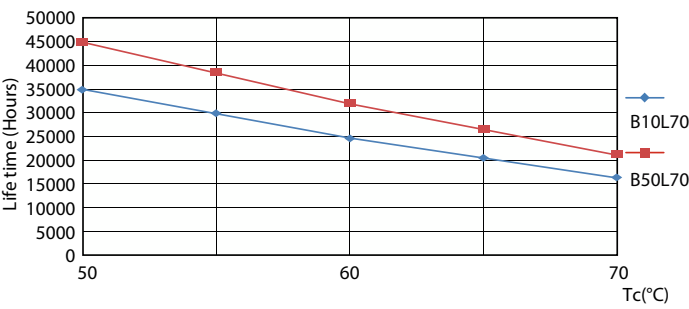
Lifetime



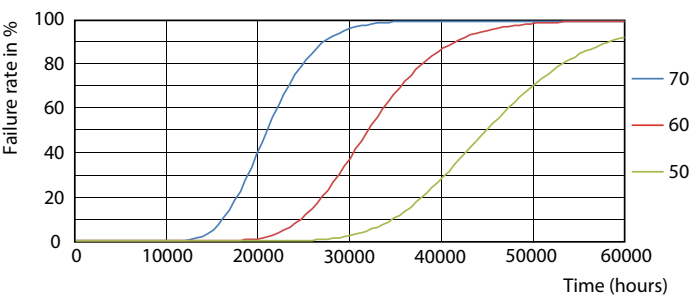
Life Expectancy Diagram



Lumen Maintenance Diagram - 11PL-C/T/COR/32V-3CCT/MF15/P/20/1

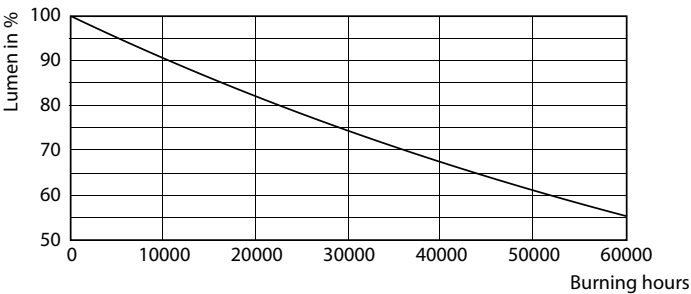


LifetimeVsTc



FailureRate

Lifetime



Lumen Maintenance Diagram - 11PL-C/T/COR/32V-3CCT/MF15/P/20/1

