

# MainsFit (UL Type-B) T5

14T5HE/COR/46-850/MF21/G 25/1

The MainsFit (UL Type-B) lamps are designed to be the perfect retrofit solution to move from traditional fluorescent lamps to energy saving LEDs. This ballast bypass lamp has everything needed built into the lamp with proven energy savings, long life, surge suppression and industry leading safety features. All lamps in the MainsFit family are double-ended to help simplify the installation. In addition, all lamps meet the Philips standards for light quality so that end users will be in a comfortable environment regardless of the MainsFit lamp type.

## Product data

General Information	
Cap-Base	G5
Nominal lifetime	50,000 hour(s)
Switching Cycle	50,000
Lighting Technology	LED
Light Technical	
Color Code	850 [CCT of 5000K]
Beam Angle (Nom)	200 degree(s)
Luminous Flux	2,100 lm
Luminous Efficacy (rated) (Nom)	150.00 lm/W
Color Designation	Daylight
Correlated Color Temperature (Nom)	5000 K
Color Consistency	<5
Color rendering index (CRI)	80
LLMF At End Of Nominal Lifetime (Nom)	70 %

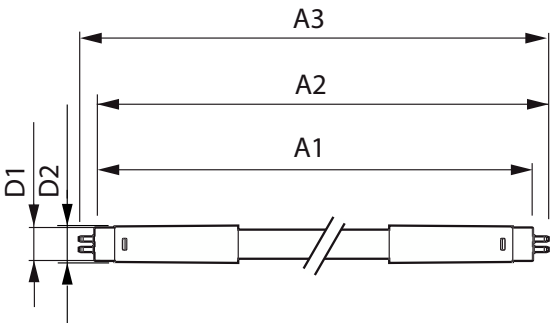
Operating and Electrical	
Line Frequency	50 to 60 Hz
Input Frequency	50 to 60 Hz
Power Consumption	14 W
Lamp Current (Max)	145 mA
Lamp Current (Min)	55 mA
Wattage Equivalent	28 W
Starting Time (Nom)	0.5 s
Warm-up time to 60% light	0.5 s
Power Factor (Fraction)	0.9
Voltage (Nom)	120-277 V
UL Type	UL Type B
Temperature	
Ambient temperature range	-20 °C to 45 °C
T-Case Maximum (Nom)	70 °C

MainsFit (UL Type-B) T5

Controls and Dimming	
Dimmable	Limited
Mechanical and Housing	
Bulb Finish	Frosted
Bulb Material	Glass
Product Length	1,200 mm
Bulb Shape	T5
Approval and Application	
Energy Saving Product	Yes
Approval Marks	RoHS compliance UL certificate DLC compliance
EU RoHS compliant	Yes

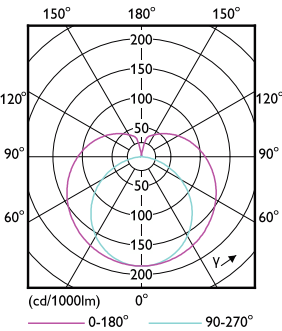
Application Conditions	
can it be used in closed luminaires	Yes
Product Data	
Order product name	14T5HE/COR/46-850/MF21/G 25/1
Full product name	14T5HE/COR/46-850/MF21/G 25/1
Order code	929003123504
Material Nr. (12NC)	929003123504
Numerator - Quantity Per Pack	1
Net Weight (Piece)	0.151 kg
EAN/UPC - Product/Case	046677576226
Numerator - Packs per outer box	25
EAN/UPC - Case	50046677576221

Dimensional drawing

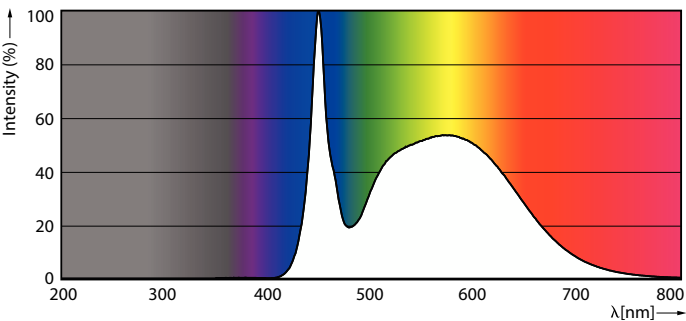


Product	D1	D2	A1	A2	A3
14T5HE/COR/46-850/MF21/G 25/1	15.3 mm	18.2 mm	1,149 mm	1,154.9 mm	1,163.2 mm

Photometric data



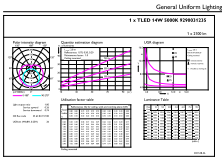
Light Distribution Diagram - 14T5HE/COR/46-850/MF21/G 25/1



Spectral Power Distribution Colour - 14T5HE/COR/46-850/MF21/G 25/1

MainsFit (UL Type-B) T5

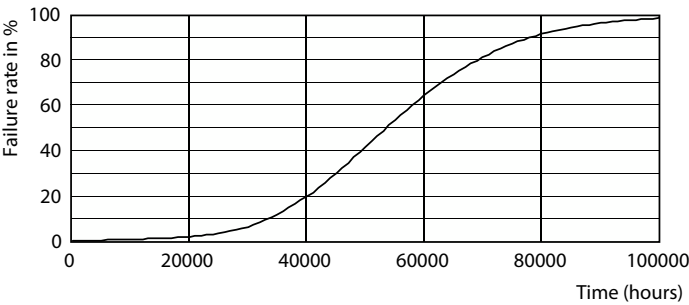
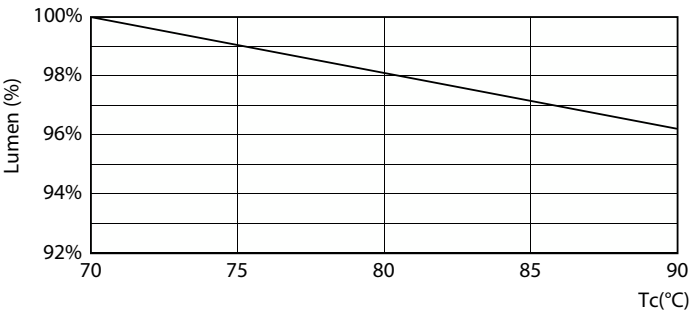
Photometric data



General Uniform Lighting - 14T5HE/COR/46-850/MF21/G 25/1

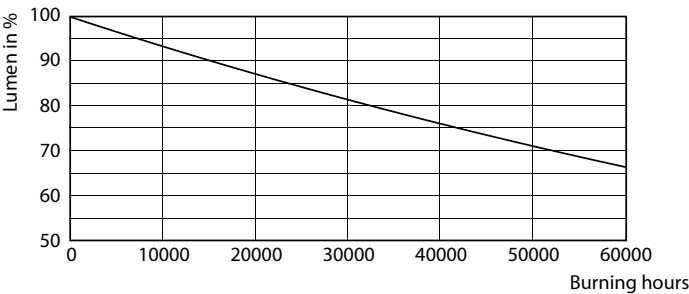
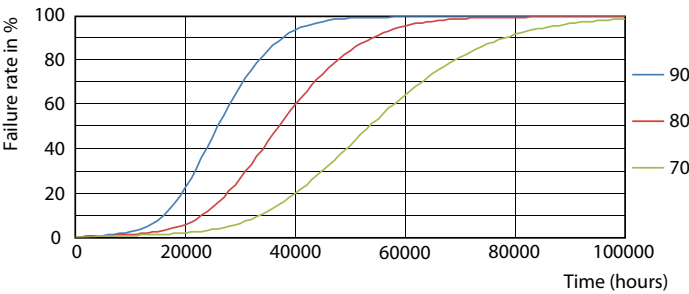
General uniform lighting - 14T5HE/COR/46-850/MF21/G 25/1

Lifetime



Lumen Maintenance Diagram - 14T5HE/COR/46-850/MF21/G 25/1

Life Expectancy Diagram



LEDtube 50K 7090 FailureRate-LED

Lumen Maintenance Diagram - 14T5HE/COR/46-850/MF21/G 25/1

MainsFit (UL Type-B) T5

Lifetime



LifetimeVsTc

