



Corepro InstantFit (UL Type-A) T8

10T8/COR/48-830/IF15/G/DIM 10/1

The CorePro InstantFit LED lamps provide hassle-free installation with simple lamp-for-lamp replacements. They deliver what we promise, with at least 40% energy savings, flicker-free performance, and the life you would expect. Other lamps claim compatibility but only CorePro InstantFit (UL Type A) has been proven to work with over 200 ballasts and drivers, delivering even light output, with proven energy savings and a long average lifetime. End users will be delighted being under these comfortable and high quality CorePro InstantFit lamps with no visible flicker and optimized optics. Energy managers will enjoy these lamps too as they can count the savings delivered by our lamps. To enjoy more energy savings, the CorePro InstantFit lamps can be paired with the Advance TLED drivers to create a Type C system.

Product data

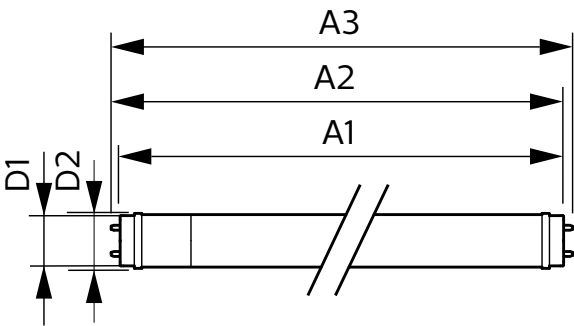
General Information		Color Consistency	
Cap-Base	G13 [Medium Bi-Pin Fluorescent]	Color rendering index (CRI)	<6
Nominal lifetime	70,000 hour(s)	LLMF At End Of Nominal Lifetime (Nom)	70 %
Switching Cycle	50,000	Operating and Electrical	
Lighting Technology	LED	Line Frequency	25000-105000 Hz
EU RoHS compliant	Yes	Input Frequency	25000-105000 Hz
Light Technical		Power Consumption	10 W
Color Code	830 [CCT of 3000K]	Lamp Current (Max)	260 mA
Beam Angle (Nom)	240 degree(s)	Lamp Current (Min)	100 mA
Luminous Flux	1,500 lm	Wattage Equivalent	32 W
Color Designation	White (WH)	Starting Time (Nom)	0.5 s
Correlated Color Temperature (Nom)	3000 K	Warm-up time to 60% light	0.5 s
Luminous Efficacy (rated) (Nom)	160.00 lm/W	Power Factor (Fraction)	0.9

Corepro InstantFit (UL Type-A) T8

Voltage (Nom)	120-277, 347 V
UL Type	UL Type A
Temperature	
Ambient temperature range	-20 °C to 45 °C
T-Case Maximum (Nom)	50 °C
Controls and Dimming	
Dimmable	Yes
Mechanical and Housing	
Bulb Finish	Frosted
Bulb Material	Glass
Product Length	1,200 mm
Bulb Shape	T8
Approval and Application	
Energy Saving Product	Yes

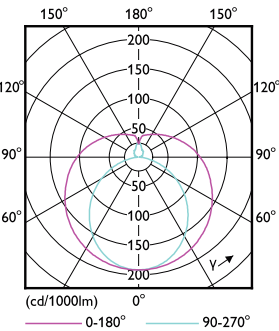
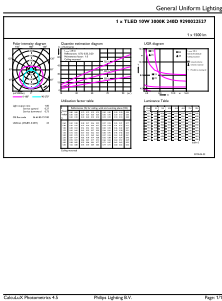
Approval Marks	RoHS compliance UL certificate DLC compliance
Energy Consumption kWh/1000 h	- kWh
Application Conditions	
can it be used in closed luminaires	Yes
Product Data	
Order product name	10T8/COR/48-830/IF15/G/DIM 10/1
Full product name	10T8/COR/48-830/IF15/G/DIM 10/1
Order code	929002252734
Material Nr. (12NC)	929002252734
Numerator - Quantity Per Pack	1
EAN/UPC - Product/Case	046677553210
Numerator - Packs per outer box	10
EAN/UPC - Case	50046677553215

Dimensional drawing



Product	D1	D2	A1	A2	A3
10T8/COR/48-830/IF15/G/DIM 10/1	25.7 mm	28 mm	1,198.1 mm	1,205.2 mm	1,212.3 mm

Photometric data

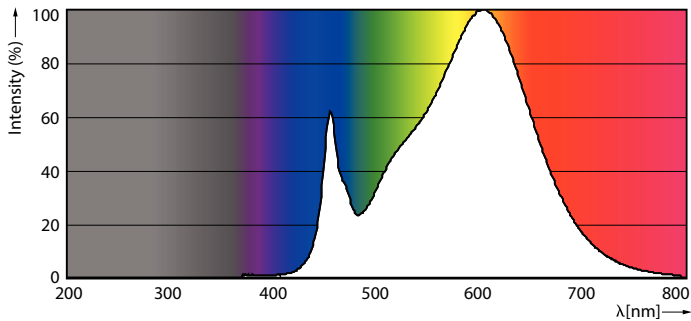


Accent Lighting Spots - 10T8/COR/48-830/IF15/G/DIM 10/1

Light Distribution Diagram - 10T8/COR/48-830/IF15/G/DIM 10/1

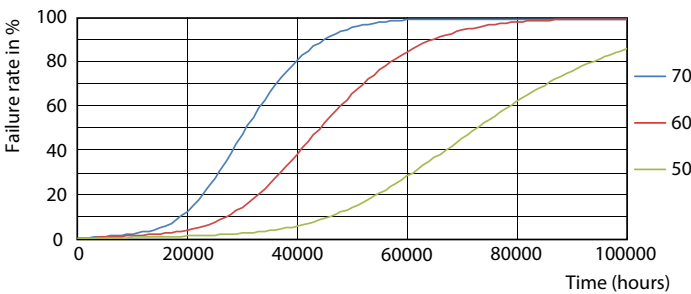
Corepro InstantFit (UL Type-A) T8

Photometric data

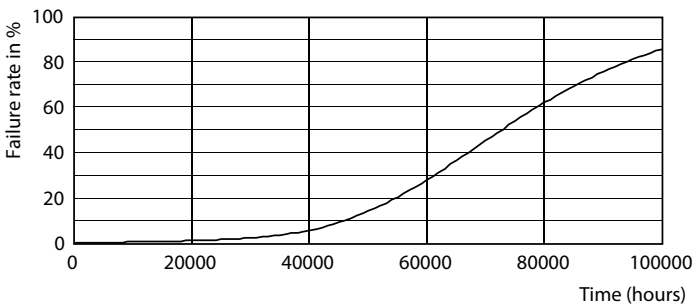


Spectral Power Distribution Colour - 10T8/COR/48-830/IF15/G/DIM 10/1

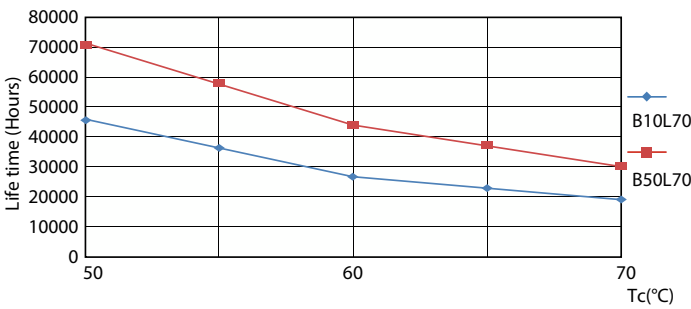
Lifetime



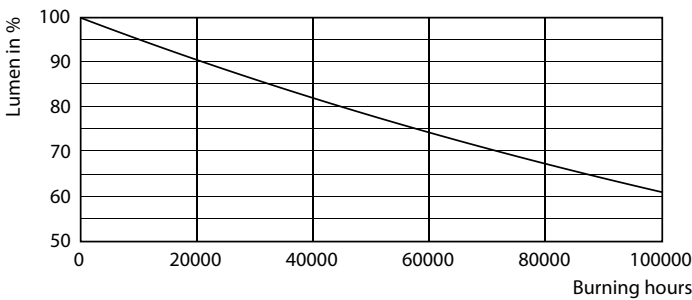
Life Expectancy Diagram - 10T8/COR/48-830/IF15/G/DIM 10/1



Life Expectancy Diagram - 10T8/COR/48-830/IF15/G/DIM 10/1



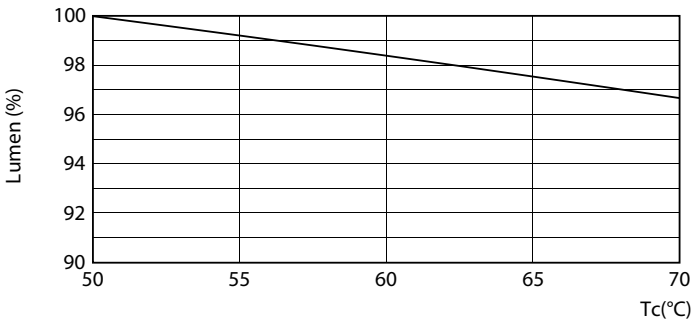
Life Expectancy Diagram - 10T8/COR/48-830/IF15/G/DIM 10/1



Lumen Maintenance Diagram - 10T8/COR/48-830/IF15/G/DIM 10/1

Corepro InstantFit (UL Type-A) T8

Lifetime



Lumen Maintenance Diagram - 10T8/COR/48-830/IF15/G/DIM 10/1

