



PL-L

16.5PL-L/COR/22-835/IF22/P/4P/DIM 10/1

Philips InstantFit LED lamps make the transition to LED from CFL lamps as simple as replacing a lamp. With a wide array of color temperatures, the InstantFit LED lamps can quickly and effectively replace compact fluorescent lamps.

Product data

General Information	
Cap-Base	2G11 [2G11]
Nominal lifetime	50,000 hour(s)
Switching Cycle	50,000
Lighting Technology	LED
EU RoHS compliant	Yes

Light Technical	
Color Code	835 [CCT of 3500K]
Beam Angle (Nom)	160 degree(s)
Luminous Flux	2,200 lm
Color Designation	White (WH)
Correlated Color Temperature (Nom)	3500 K
Luminous Efficacy (rated) (Nom)	133.00 lm/W
Color Consistency	<6
Color rendering index (CRI)	82
LLMF At End Of Nominal Lifetime (Nom)	70 %

Operating and Electrical	
Line Frequency	40000-160000 Hz
Input Frequency	40000-160000 Hz
Power Consumption	16.5 W
Lamp Current (Max)	400 mA
Lamp Current (Min)	200 mA

Wattage Equivalent	40 W
Starting Time (Nom)	0.5 s
Warm-up time to 60% light	0.5 s
Power Factor (Fraction)	0.9
Voltage (Nom)	70-110 V
UL Type	UL Type A

Temperature	
Ambient temperature range	-20 °C to 45 °C
T-Case Maximum (Nom)	75 °C

Controls and Dimming	
Dimmable	Only with specific dimmers

Mechanical and Housing	
Bulb Finish	Frosted
Bulb Material	Plastic
Product Length	580 mm
Bulb Shape	PL-L

Approval and Application	
Energy Saving Product	Yes
Approval Marks	UL certificate RoHS compliance DLC compliance

PL-L

Energy Consumption kWh/1000 h	- kWh
Energy Certifications	DLC Standard

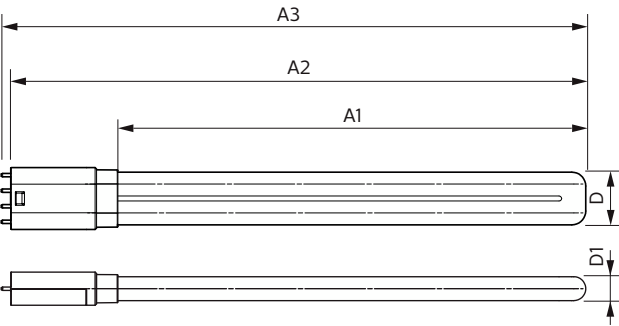
Application Conditions

can it be used in closed luminaires	Yes
-------------------------------------	-----

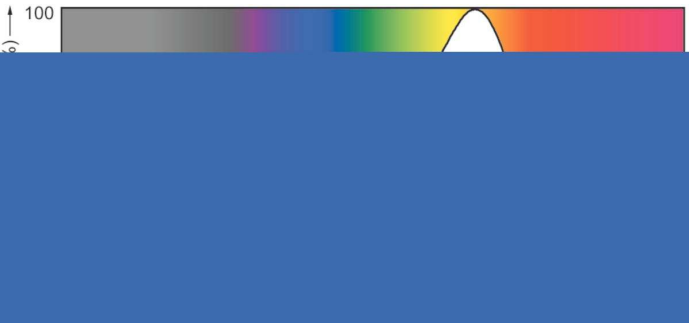
Product Data

Order product name	16.5PL-L/COR/22-835/IF22/P/4P/DIM 10/1
Full product name	16.5PL-L/COR/22-835/IF22/P/4P/DIM 10/1

Dimensional drawing



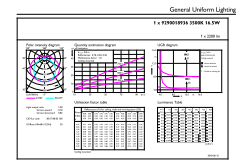
Photometric data



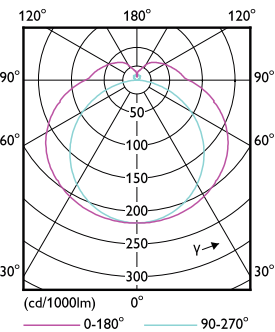
Spectral Power Distribution Colour - 16.5PL-L/COR/22-835/IF22/P/4P/DIM 10/1

Order code	929001893604
Material Nr. (12NC)	929001893604
Numerator - Quantity Per Pack	1
EAN/UPC - Product/Case	046677532901
Numerator - Packs per outer box	10
EAN/UPC - Case	50046677532906

Product	D	D1	A1	A2	A3
16.5PL-L/COR/22-835/IF22/P/4P/DIM 10/1	40.6 mm	20 mm	501 mm	564 mm	570.6 mm

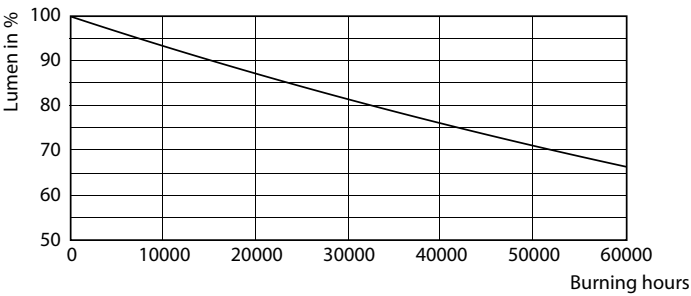


General uniform lighting - 16.5PL-L/COR/22-835/IF22/P/4P/DIM 10/1

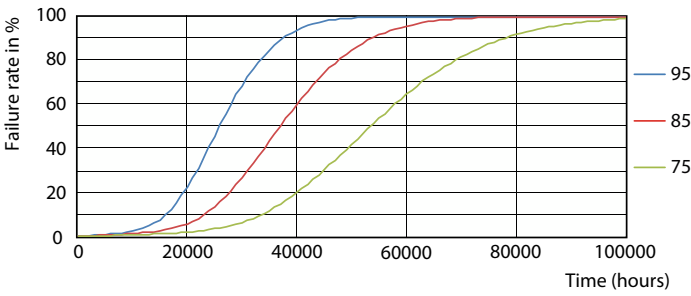


Light Distribution Diagram - 16.5PL-L/COR/22-835/IF22/P/4P/DIM 10/1

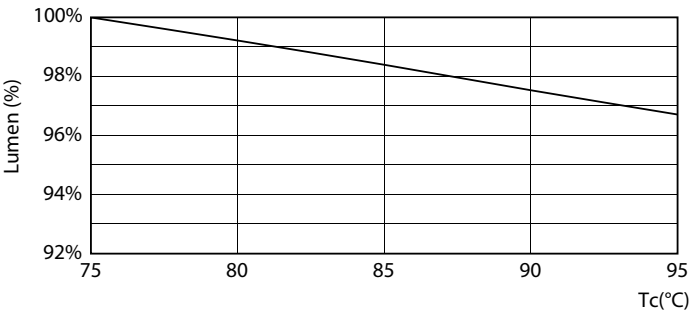
Lifetime



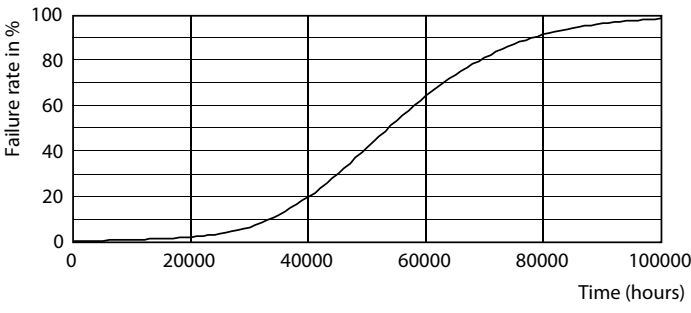
Lumen Maintenance Diagram - 16.5PL-L/COR/22-835/IF22/P/4P/DIM 10/1



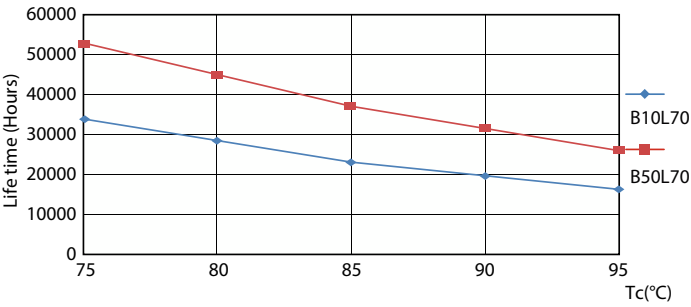
Life Expectancy Diagram - 16.5PL-L/COR/22-835/IF22/P/4P/DIM 10/1



Lumen Maintenance Diagram - 16.5PL-L/COR/22-835/IF22/P/4P/DIM 10/1



Life Expectancy Diagram - 16.5PL-L/COR/22-835/IF22/P/4P/DIM 10/1



Life Expectancy Diagram - 16.5PL-L/COR/22-835/IF22/P/4P/DIM 10/1

