



# PL-C/T

## 5.5PL-C/LED/13H/830/IF5/P/4P 20/1

Philips PLED 4-pin & 2-pin lamps are an affordable LED solution to replace compact fluorescent lamps. The product provides a natural lighting effect for use in many lighting applications, and provides instant energy savings, making them an environmentally-friendly solution. Available as replacements for 13W, 26W and 32W compact fluorescent lamps.

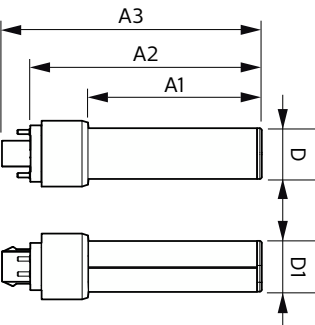
### Product data

<b>General Information</b>		<b>Lamp Current (Max)</b>		280 mA
Cap-Base	G24Q [G24q]	<b>Lamp Current (Min)</b>		130 mA
Nominal lifetime	50,000 hour(s)	<b>Wattage Equivalent</b>		13 W
Switching Cycle	50,000	<b>Starting Time (Nom)</b>		0.5 s
Lighting Technology	LED	<b>Warm-up time to 60% light</b>		0.5 s
EU RoHS compliant	Yes	<b>Power Factor (Fraction)</b>		0.9
<b>Light Technical</b>		<b>Voltage (Nom)</b>		14-60 V
Color Code	830 [CCT of 3000K]	<b>UL Type</b>		UL Type A
Beam Angle (Nom)	150 degree(s)	<b>Temperature</b>		
Luminous Flux	550 lm	<b>Ambient temperature range</b>		-20 °C to 45 °C
Color Designation	White (WH)	<b>T-Case Maximum (Nom)</b>		75 °C
Correlated Color Temperature (Nom)	3000 K	<b>Controls and Dimming</b>		
Luminous Efficacy (rated) (Nom)	100.00 lm/W	<b>Dimmable</b>		Yes
Color Consistency	<6	<b>Mechanical and Housing</b>		
Color rendering index (CRI)	82	<b>Bulb Finish</b>		Frosted
LLMF At End Of Nominal Lifetime (Nom)	70 %	<b>Bulb Material</b>		Plastic
<b>Operating and Electrical</b>		<b>Product Length</b>		140 mm
Line Frequency	25000-100000 Hz	<b>Bulb Shape</b>		PL-C
Input Frequency	25000-100000 Hz			
Power Consumption	5.5 W			

Approval and Application	
Energy Saving Product	Yes
Approval Marks	RoHS compliance UL certificate
Energy Consumption kWh/1000 h	- kWh
Application Conditions	
can it be used in closed luminaires	Yes
Product Data	
Order product name	5.5PL-C/LED/13H/830/IF5/P/4P 20/1

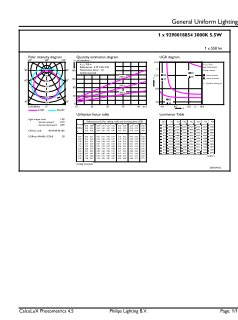
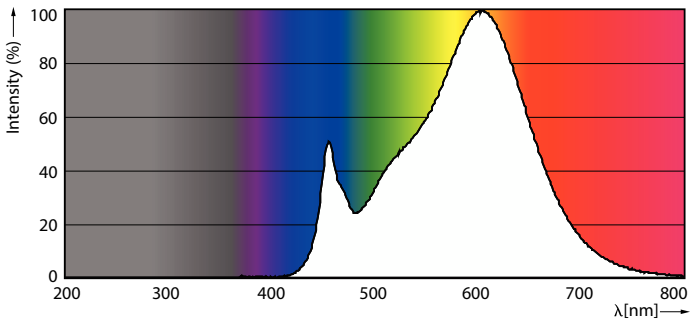
Full product name	5.5PL-C/LED/13H/830/IF5/P/4P 20/1
Order code	929001885404
Material Nr. (12NC)	929001885404
Numerator - Quantity Per Pack	1
EAN/UPC - Product/Case	046677532406
Numerator - Packs per outer box	20
EAN/UPC - Case	50046677532401

Dimensional drawing



Product	D	D1	A1	A2	A3
5.5PL-C/LED/13H/830/IF5/P/4P 20/1	27 mm	27 mm	91.5 mm	122.4 mm	137.4 mm

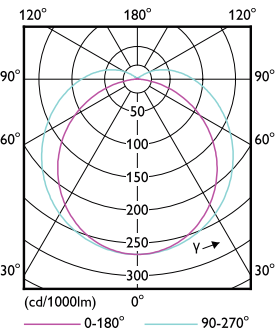
Photometric data



Spectral Power Distribution Colour - 5.5PL-C/LED/13H/830/IF5/P/4P 20/1

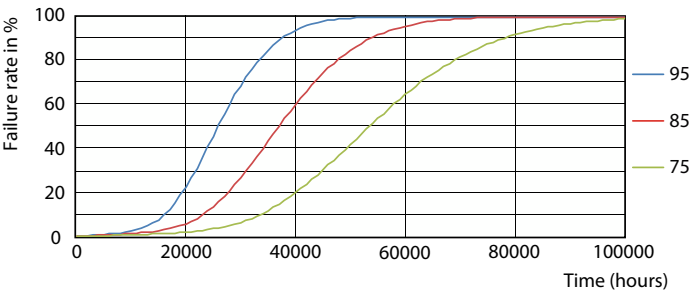
General uniform lighting - 5.5PL-C/LED/13H/830/IF5/P/4P 20/1

Photometric data

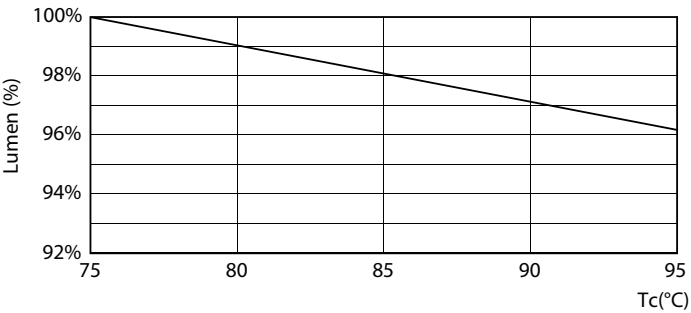


Light Distribution Diagram - 5.5PL-C/LED/13H/830/IF5/P/4P 20/1

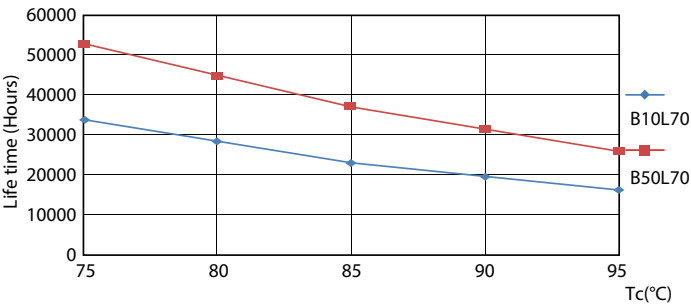
Lifetime



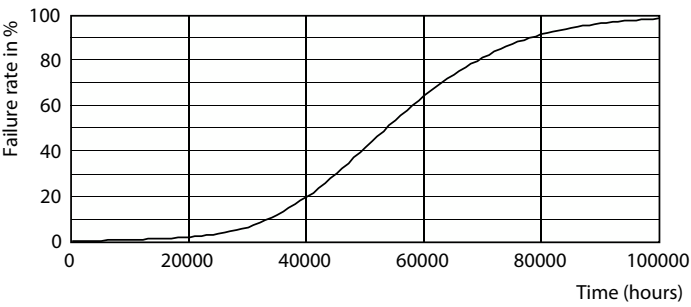
Life Expectancy Diagram - 5.5PL-C/LED/13H/830/IF5/P/4P 20/1



Lumen Maintenance Diagram - 5.5PL-C/LED/13H/830/IF5/P/4P 20/1

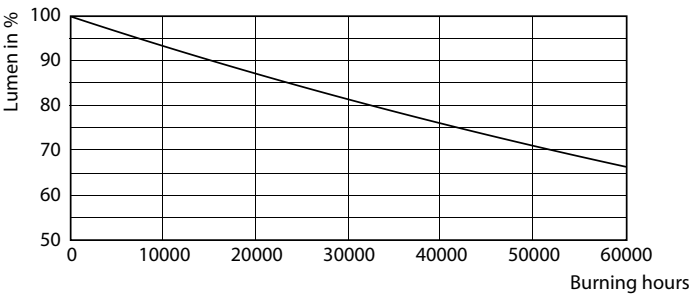


Life Expectancy Diagram - 5.5PL-C/LED/13H/830/IF5/P/4P 20/1



Life Expectancy Diagram - 5.5PL-C/LED/13H/830/IF5/P/4P 20/1

Lifetime



Lumen Maintenance Diagram - 5.5PL-C/LED/13H/830/IF5/P/4P 20/1

