



PL-C/T

12PL-C/T/COR/32V-830/IF14/P/4P/DIM 10/1

Philips PLED 4-pin & 2-pin lamps are an affordable LED solution to replace compact fluorescent lamps. The product provides a natural lighting effect for use in many lighting applications, and provides instant energy savings, making them an environmentally-friendly solution. Available as replacements for 13W, 26W and 32W compact fluorescent lamps.

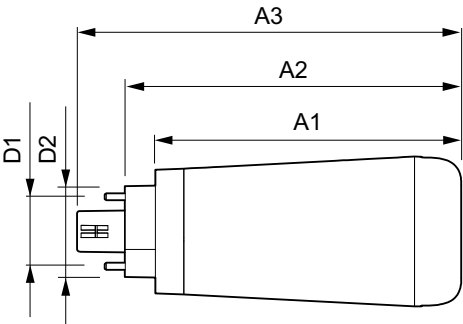
Product data

General Information		Lamp Current (Max)		500 mA
Cap-Base	GX24q	Lamp Current (Min)	150 mA	
Nominal lifetime	50,000 hour(s)	Wattage Equivalent	32 W	
Switching Cycle	50,000	Starting Time (Nom)	0.5 s	
Lighting Technology	LED	Warm-up time to 60% light	0.5 s	
EU RoHS compliant	Yes	Power Factor (Fraction)	0.9	
Light Technical		Voltage (Nom)	25-55 V	
Color Code	830 [CCT of 3000K]	UL Type	UL Type A	
Beam Angle (Nom)	120 degree(s)	Temperature		
Luminous Flux	1,400 lm	Ambient temperature range	-20 °C to 45 °C	
Color Designation	White (WH)	T-Case Maximum (Nom)	25 °C	
Correlated Color Temperature (Nom)	3000 K	Controls and Dimming		
Luminous Efficacy (rated) (Nom)	116.00 lm/W	Dimmable	Yes	
Color Consistency	<6	Mechanical and Housing		
Color rendering index (CRI)	82	Bulb Finish	Frosted	
LLMF At End Of Nominal Lifetime (Nom)	70 %	Bulb Material	Plastic	
Operating and Electrical		Product Length	100 mm	
Line Frequency	20000-100000 Hz	Bulb Shape	PL-C;PL-T	
Input Frequency	20000-100000 Hz			
Power Consumption	12 W			

Approval and Application	
Energy Saving Product	Yes
Approval Marks	RoHS compliance UL certificate KEMA Keur certificate DLC compliance
Energy Consumption kWh/1000 h	- kWh
Energy Certifications	DLC Standard
Application Conditions	
can it be used in closed luminaires	Yes
Product Data	
Order product name	12PL-C/T/COR/32V-830/IF14/P/4P/DIM 10/1

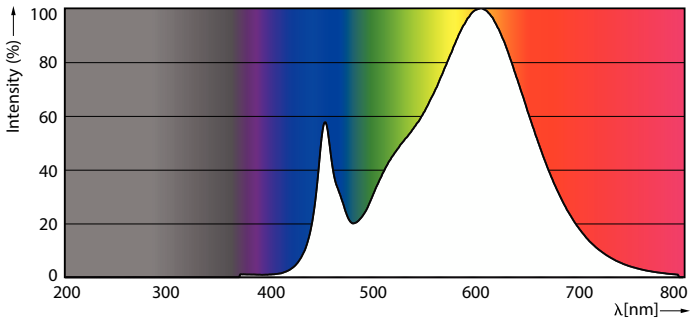
Full product name	12PL-C/T/COR/32V-830/IF14/P/4P/DIM 10/1
Order code	929001820204
Material Nr. (12NC)	929001820204
Numerator - Quantity Per Pack	1
EAN/UPC - Product/Case	046677476113
Numerator - Packs per outer box	10
EAN/UPC - Case	50046677476118

Dimensional drawing

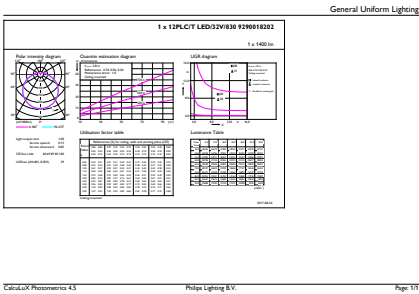


Product	D1	D2	A1	A2	A3
12PL-C/T/COR/32V-830/ IF14/P/4P/DIM 10/1	24.3 mm	29 mm	99.9 mm	109.9 mm	125.5 mm

Photometric data

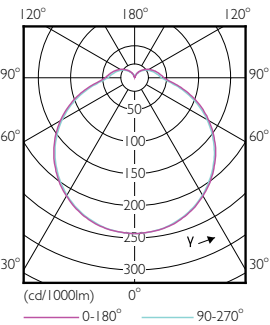


Spectral Power Distribution Colour - 12PL-C/T/COR/32V-830/IF14/P/4P/DIM 10/1



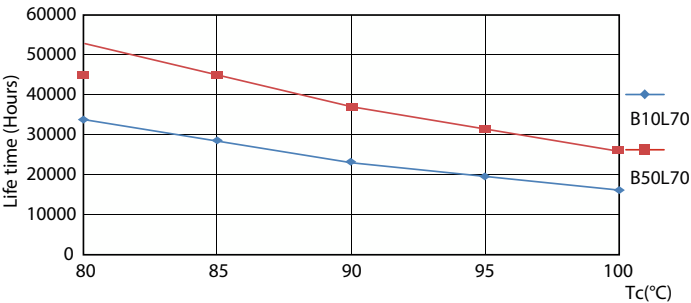
General uniform lighting - 12PL-C/T/COR/32V-830/IF14/P/4P/DIM 10/1

Photometric data

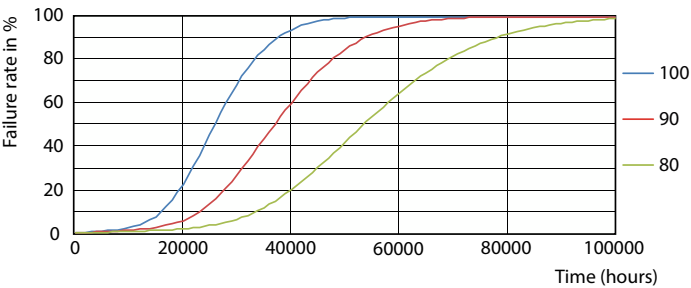


Light Distribution Diagram - 12PL-C/T/COR/32V-830/IF14/P/4P/DIM 10/1

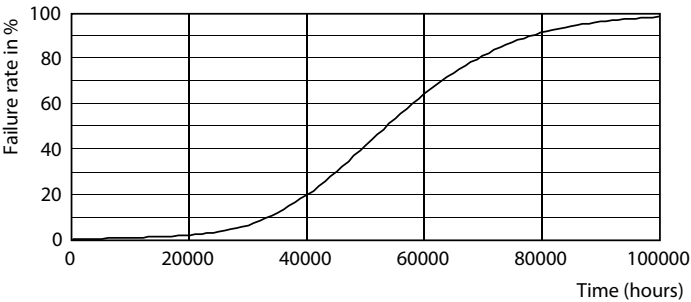
Lifetime



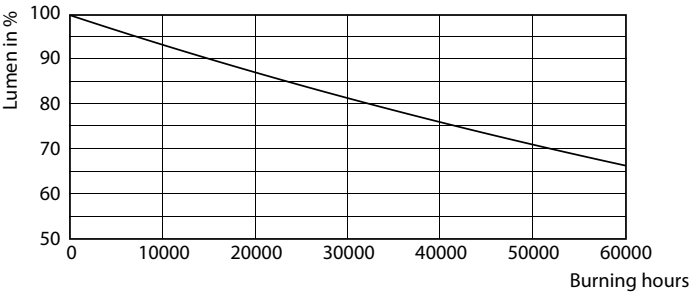
Life Expectancy Diagram - 12PL-C/T/COR/32V-830/IF14/P/4P/DIM 10/1



Life Expectancy Diagram - 12PL-C/T/COR/32V-830/IF14/P/4P/DIM 10/1

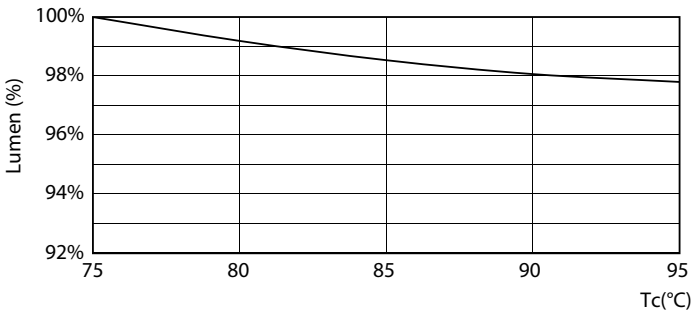


Life Expectancy Diagram - 12PL-C/T/COR/32V-830/IF14/P/4P/DIM 10/1



Lumen Maintenance Diagram - 12PL-C/T/COR/32V-830/IF14/P/4P/DIM 10/1

Lifetime



Lumen Maintenance Diagram - 12PL-C/T/COR/32V-830/IF14/P/4P/DIM
10/1

