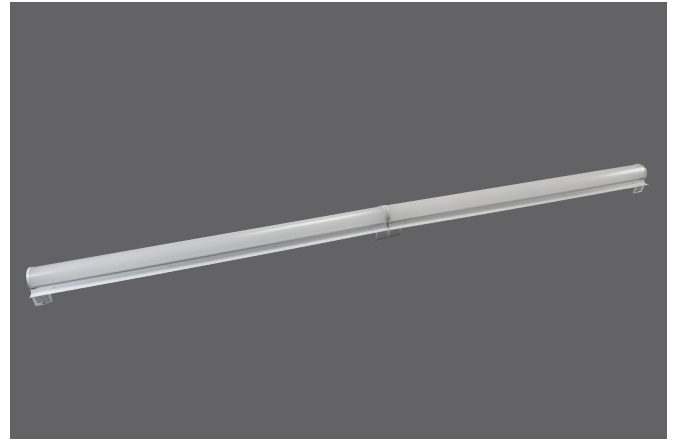




KT-RKIT55-8S-8XX-VDIM

LED RETROFIT STRIP KIT



DESCRIPTION

8' LED Retrofit Strip Kit, 55W, 120-277V, 0-10V Dimming



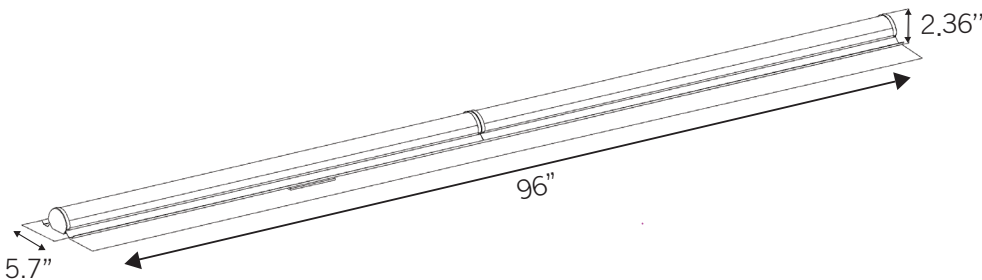
PRODUCT FEATURES

- Used to upgrade existing 4" - 5.25" wide strip fixtures without modifying the existing fixture mounting
- Architectural Grade Design
- Powered by Keystone 0-10V Dimming LED Driver
- Compatible with Keystone SmartSafe LED Emergency Drivers
- Suitable for Damp Location
- Operating Temperature Range:-20° C to 50° C
- (2) 4' channels linked together
- 5 Year Warranty
- DLC Listed
- 50,000 Hours Rated Life
- Over 50% Energy Savings as Compared to Traditional Fluorescent Troffers
- THD:<20%
- PF:>0.9

PERFORMANCE SPECIFICATIONS

Catalog Number	Input Voltage	Wattage	Color Temperature	Lumens	CRI	Power Factor	Efficacy	Lifetime
KT-RKIT55-8S-835-VDIM	120-277V	55	3500K	7150	>80	>0.9	130lm/W	50,000 Hour
KT-RKIT55-8S-840-VDIM	120-277V	55	4000K	7260	>80	>0.9	132lm/W	50,000 Hour
KT-RKIT55-8S-850-VDIM	120-277V	55	5000K	7370	>80	>0.9	134lm/W	50,000 Hour

PHYSICAL SPECIFICATIONS



KT-RKIT55-8S-8XX-VDIM

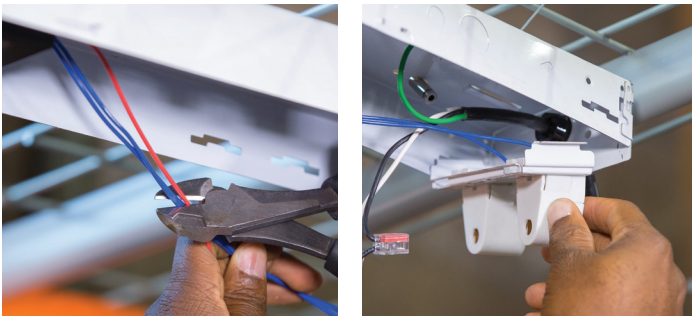
LED RETROFIT STRIP KIT

INSTALLATION STEPS

1. Shut off power to the fixture. Remove the existing fluorescent lamps and the ballast cover. Disconnect the ballast from the building's line voltage.



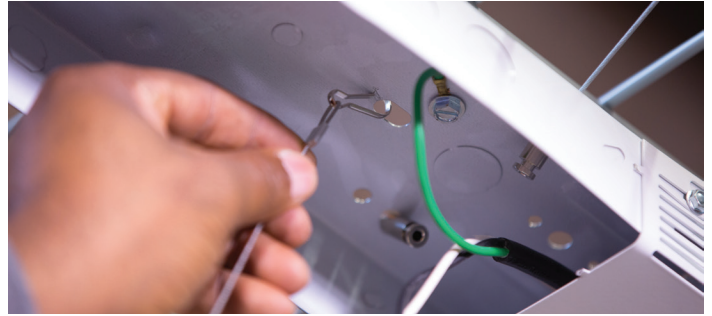
2. Cut the wire leads coming from the sockets and remove the sockets and socket bars on both ends of the fixture.



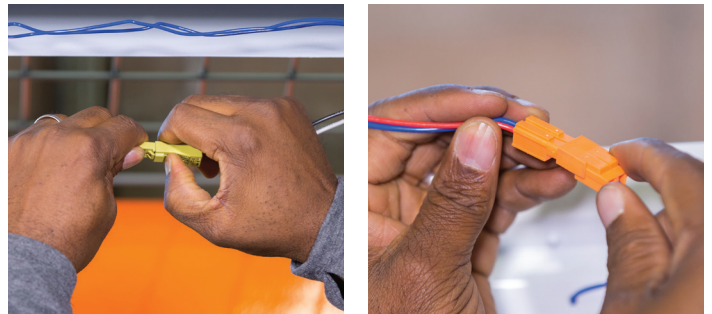
3. Break apart the 1-piece mounting bracket kit into 3 individual pieces. Install a small bracket to each end of the fixture and the large bracket at the center of fixture (for 8' fixtures only) by bending them over the fixture to fit the exact width and fastening them to the fixture with the provided tek screws.



4. Fasten the safety cables (x2) from the retrofit pan(s) to the fixture housing using existing lances/holes of the fixture.



5. Make electrical connections for input power (via the included Power Quick Disconnect) and fixture ground. 0-10V connections optional. For 8' kits only: connect the LED module wiring between the 2 strip pans via the pre-wired linking connector.



6. Fasten the pans to the strip fixture with a quarter turn (provided) on each end.





KT-RKIT55-8S-8XX-VDIM

LED RETROFIT STRIP KIT

7. Install the lens by gently squeezing it into the grooved edge of the pan.



8. Restore power to the fixture.



COMPONENT SUMMARY

Part	Qty.
Retrofit housing	2
Installation Bracket	3
Installation Instruction	1
Lens	2
Label	1

CATALOG NUMBER BREAKDOWN

KT-RKIT55-8S-8XX-VDIM

1 2 3 4 5 6 7 8

- 1 Keystone Technologies
- 2 Retrofit Kit
- 3 Wattage
- 4 8' Size
- 5 Lamp Type
- 6 80 CRI
- 7 Color Temperature
- 8 0-10V Dimming